



Our Village Magazine

# EYESCAN

Issue 151 August 2024

From the editor....

## Welcome to Eyescan

Summer is finally here and I hope you can all enjoy and relax over the summer break.

The Eye Summer Festival was a fantastic success even with the dismal weather! We are already thinking about 2025 to build on our success. Thank you to all the residents and businesses that supported us. Full report and pictures can be found in this edition.

Manor Farm Park has received its 12th consecutive Green Flag award. Congratulations and well done to the Eye Open Space group who work tirelessly to maintaining our park.

Our next events are Autumn Bingo and Halloween Disco at the Manor Community Centre. I hope you can join us for some good family fun.

I hope you enjoy this edition of Eyescan and please feel free to get in touch.

Have a fabulous summer!

*Gabriela*

Manor Farm Community  
Centre Event & Private Hire  
Fees:

£40 per hour - Hall  
£30 per hour - Meeting Room  
£15 - Kitchen Hire  
£30 - Bar hire

Returnable deposit of £100  
with booking form to secure  
it.

Office hours: Mon - Fri  
9am - 12pm  
01733 222394

[enquiries@eyecomassn.plus.com](mailto:enquiries@eyecomassn.plus.com)

Would you like to advertise in  
Eyescan?

Eyescan is a quarterly  
magazine with a large  
distribution network of 2,500  
homes.

1/4 page £35

1/2 page £45

Full page £80

Back page £100

Get in touch to discuss  
availability -

[enquiries@eyecomassn.plus.com](mailto:enquiries@eyecomassn.plus.com)

Closing date for next issue  
10th October 2024

Manor Farm Community  
Centre  
70 High Street Eye PE6 7UY

# MESSAGE FROM THE CHAIRMAN

## Summer

In the last issue of Eyescan, I started this page with 'Spring is here', so as I type for this latest edition, in temperature of +25 degrees, it is fitting to start with 'Now Summer is here'. Let us all hope this weather lasts for the duration of this edition – next one due in November.

## AGM

Eye Community Association held its Annual General meeting in May, and as usual the invitation to all user groups, and residents, did not produce an overwhelming attendance. We did however introduce a small price rise for our Regular Users, the first for two years, and the discount on the full price is still 50%.

## New Councillor

In the May local elections Mark Ormston was elected as Ward Councillor for Eye, Thorney & Newborough. I have met with Mark at the Community Centre, and he will work with our other Councillors, Steve Allen, and Rylan Ray to take a keen interest in our building, and what we do at Manor Farm.

## Disco

May 4th was the day for digging out the Star Wars costumes, and enjoying our Star Wars Disco. Photographs, and report elsewhere in this edition. Thanks to all who helped.

## 80th Anniversary D-Day

Eye Village took part in marking the 80th Anniversary of D-Day, with Lighting of the Beacon in Manor Farm Park, and reading the National Tribute. Again see a full report elsewhere in the edition.

## Summer Festival

By the time you receive this edition, the revival, after many years, the Eye Summer Festival will have taken place. I hope you went along, and had a great time.

## Upcoming Events

Autumn Bingo will be on September 6th, Doors open at 6.30pm  
Halloween Disco November 1st

**Adrian**



# Neighbourhood Watch

## Eye & Eye Green



### Summer

The better weather is here (at last), so do take care to stay safe. Remember that leaving doors and windows open to keep your house cool, while enjoying a barbecue in the back garden, is like a personal invitation to a thief to enter your house.

Do please look out for vulnerable neighbours, especially those who suffer breathing difficulties, or have strong allergy to Hay Fever, perhaps try and save them a journey out, in the hottest part of the day.

Try also to impress upon our younger residents that the Nature Reserve is not for swimming. People have unfortunately died while trying to cool off in the Nature Reserve, let us do what we can to prevent a further tragedy.

### Local Councillor

Since the last edition of Eyescan we have had local elections, and a new Ward Councillor for Eye, Thorney & Newborough - Mark Ormston. Regular Saturday Surgeries are being held, in the Leeds Hall - the next two dates are: 24th August and 12th October 2024.

### Police

Cambridgeshire police Neighbourhood Team will also be holding a local surgery in the Leeds hall on Tuesday 27th August 2024, between 5.00 and 7.00pm

### Membership

Are you a member of Neighbourhood Watch, do consider joining. It is free, and once in membership you will receive regular information on major local issues from the police, as well as monthly newsletters from myself.

It is free to join, and no monthly or annual charges. If you would like to form a watch in your street please get in touch, we are always looking to increase NHW in the village.

A final reminder that if your are aware of any incidents or issues, please get in touch, and do report these to the police as well, it is important.

Stay Safe

Adrian Martin - Village Coordinator  
01733 719996  
adrian.martin@googlemail.com



JOIN US FOR A

# Halloween Disco

FANCY DRESS  
HOT DOGS  
CAKES  
BAR OPEN

FRIDAY

1  
NOV

TICKETS  
ADULTS £4.00  
CHILDREN £2.00  
FAMILY TICKET  
2 ADULTS & 2 CHILDREN  
£10  
AT 6.30 PM

**MANOR FARM COMMUNITY CENTRE**

EYE, PE6 7UY



FESTIVAL

# Eye Festival Manor Farm Park

FESTIVAL

Eye Summer Festival took place on Saturday 6th July and what a fantastic day! We had over 30 stallholders with a good mix of community groups, local produce and activities for children. The local fire and police teams joined us and the children enjoyed sitting in the different vehicles.

The army cadets were very popular, they dressed up visitors in their army kit along with camo face paint and created an obstacle course for them to run. Music acts performed throughout the day and we were very lucky to have some very local acts who got the crowd going.

Big thanks to our sponsors who got this event off the ground - **Dalton Seeds, Peterborough Presents, Pioneer Caravans, COOP, Asda, Peterborough Lions Rugby, Edward Stuart, Multifab and Reynolds & Co.**

This event received no funding from Peterborough City Council or the Parish Council and we are keen to get planning for 2025. We want to grow the event and if you would like to join our committee, be a volunteer or would like to sponsor for 2025 please get in touch with Gabriela on Facebook Eye Summer Festival or email [eyevillagefestival@gmail.com](mailto:eyevillagefestival@gmail.com)





# Eye WI



## EYE WI

Hopefully by the time you read this issue of Eyescan we will have some Summer weather!

For our meeting on 8th August we will have fun playing Carpet Bowls with a competition for a 'seaside scene'

On 12th September we have a talk on Antarctica with a competition for a 'snow scene'

Plans are being made for a Harvest Lunch on 10th October which will be at 1pm. The competition will be for 'carved vegetable'

Moving onto November's meeting we have a return visit .... Soay Sheep crafting and the competition will be for the best of our efforts on the afternoon.

If you would like to come to any meeting as a 'Visitor' before committing to membership, the cost is £4 and a warm welcome awaits along with the usual cuppa.

We meet on the 2nd Thursday of every month in the Leeds Hall at 2pm.

For more information please contact our Secretary on 01733 719996

For more information our Secretary's number is 01733 719996

## Luncheon Club

### Manor Farm Community Centre

A weekly Luncheon Club for Seniors is every Thursday 12 noon at Manor Farm Community Centre.

Come and join us for a delicious home cooked two course lunch with tea/coffee/soft drinks for only £7 per person.

Raffles are held weekly

Call 01733 222394 to find out more



## FIVEJAYS DOG TRAINING

COMMUNITY CENTRE, EYE.

Every Wednesday evening

PET OBEDIENCE through to

COMPETITION TRAINING

7pm till 9pm

Our classes are provided

by Dog Trainers, with a lifetime of

experience both in

Training & Behaviour.

RINGCRAFT TRAINING

8 till 9pm

For more details please ring

01733 844020 ask for

MARION





# ZUMBA®

with MICHELLE

## FUN.FIT.FIERCE.

**IT'S HAPPENING WITHOUT YOU!**

**TUESDAY 7:30pm**

**THURSDAY 7:00pm**

**SUNDAY** Check Website for Seasonal Availability

Eye Manor Farm Community Centre  
70 High Street, Eye, Peterborough, PE6 7UY

**BOOK NOW AT [ZUMBAWITHMICHELLE.CO.UK](http://ZUMBAWITHMICHELLE.CO.UK)**



**PLEASE JOIN US! ALL WELCOME**

# 80th Anniversary D-Day

The 6th June 2024 marked the 80th Anniversary of D-Day, when the allied forces mounted the largest amphibious invasion the world has ever witnessed. In 1944 Operation Overlord saw around 4,000 ships and landing craft set down over 132,000 troops on five Normandy beaches, in an action that would bring about the liberation on North-West Europe. Over 22,400 troops died in the first 3 months of the war.

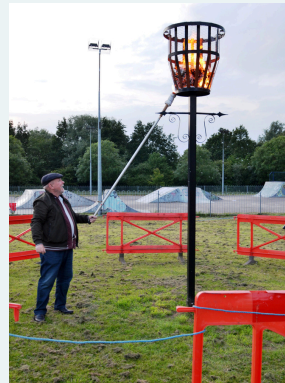


Eye Village joined with the rest of the nation to acknowledge the bravery and sacrifice of all those who secured the peace and freedom we enjoy today.

Andrew Short, Chairman of Eye Parish Council lit the Beacon at the appointed time of 9.15pm, and the National Tribute was read by representatives from Manor Farm Open Space - Dale McKean, Eye Women's Institute - Rosemary Robson, St. Matthews Church - Gary Dawkins, Eye Community Runners - Dave Richmond, Ward Councillor - Rylan Ray, Parish Council - Joss Edge, and members of Eye Girl Guides.

The event was attended by around 100 Residents.

Nationally Registered as taking part in the event, certificates are now displayed at the Leeds Hall and Community Centre.



# Your village, your say

A neighbourhood plan provides us with an opportunity to play an active role in shaping what the community wants from a local planning perspective.

We're now in the process of developing a neighbourhood plan for Eye so we need to hear from the people who live in Eye and Eye Green. **Tell us what you think about the housing, transport, services, amenities, and more.**

Sharing your thoughts via our anonymous survey will help us to deliver a neighbourhood plan that helps the village develop in the way its residents want it to.

To access the Eye Neighbourhood Plan Survey you can scan the QR code to the right or visit the link here: **[bit.ly/eyenpsurvey2024](https://bit.ly/eyenpsurvey2024)**.

Printed copies are available from the Leeds Hall and Manor Farm Community Centre. Further information is available on the Parish Council website.





## Eye Neighbourhood Plan

### Your village, your say

- Village character and vision
- Employment
- Heritage and archaeology
- Housing
- Services, amenities, and facilities
- Traffic and transport
- Sustainability and environment

To get involved contact Eye Parish Council  
Tel: 01733 222037 Email: [eyeparishcouncil@btinternet.com](mailto:eyeparishcouncil@btinternet.com)

 Facebook: Search for Eye Neighbourhood Plan

**[eyeparish.org.uk](https://www.eyeparish.org.uk)**



# St Matthew's Church



Earlier this year the Parish Council along with the assistance of the young folk from Eye School planted a sapling Oak tree in the churchyard commemorating not only our past Queen but also the coronation of King Charles III. Pleasingly the tree is flourishing well displaying strong green growth. Good work and well done to all the young green fingers involved.

Services are continuing as normal with the help of visiting Clergy and our Lay team backed by our Organist and Worship music group, we thank them all for their kind commitment to keeping things running smoothly whilst the process of engaging a new incumbent takes its course.

We owe a big thank you to the volunteer groups that worked diligently in the Vicarage gardens and also our appreciation to the neighbour who cut the frontage for us.

Folk have commented about the general appearance of the paintwork on the house front, this is in the Diocese housing department's hands and will be attended to in due course.

Thank you all for supporting our fundraising events and also those who have sacrificed their own time to help. I have expressed in the past that fundraising is necessary to raise much needed resources for the special purpose and general running costs so through your generosity we can manage to maintain our church. Keep looking for upcoming events via the website and feel free to contact Amy for more information.

Eye along with Newborough and Thorney Abbey are a Benefice and we are working out future plans for joint services such as Harvest Festival as an example, we are different village churches with some different styles of services so it will be exciting to share our worship time together at times.

We look forward to the Lantern parade later this year, it was such a success, uniting the village with all the amazing displays. We await to see all the awesome new creations that lay ahead at this year's event.

We close with best wishes to everyone, we wish you a wonderful summer break with your families and friends, and great weather ahead. Enjoy your barbecues.

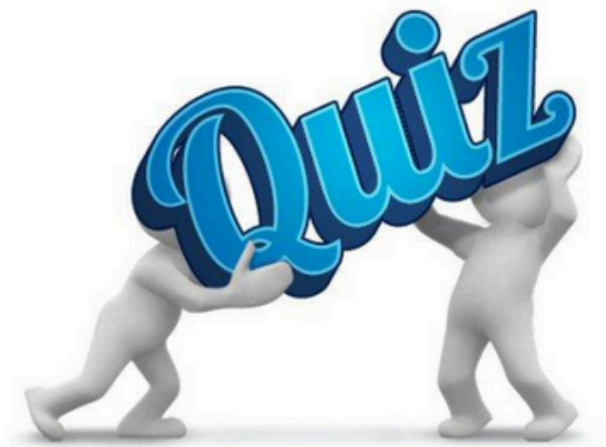
On behalf St Matthew's Eye

**FAITH CLUB**  
**ST MATTHEW'S CHURCH**  
**9.45AM**  
**2ND AND 4TH WEEK**  
**HELPING SUPPORT CHILDREN**  
**COME AND JOIN US THIS SUNDAY**  
**BUILDING FRIENDSHIPS, FUN FILLED LEARNING, PLAY GAMES.**  
**PARENTS STAY FOR CHURCH SERVICE**

# St. Matthew's Community Quiz

## Friday 4<sup>th</sup> October

Starts at 7.00pm



**Manor Farm Community Centre, Eye**

**Teams of 6 max @ £10pp**

This includes snacks (sandwiches & chips)

*(The Community Centre Bar will be available,  
so please refrain from bring any drinks into the venue.)*



Raffle

For further details please contact

[Eye.Eye@btinternet.com](mailto:Eye.Eye@btinternet.com)

Or leave your contact details at  
3 Easby Rise, Eye and we'll be in touch.



On-site Bar



# Save the Date - Eye Lantern Parade is back

In 2022, residents and community groups from Eye helped to produce a spectacular lantern parade. Hundreds of people walked with handmade lanterns. There were carols in garages, a giant whale that chased a fisherman and even a tractor.

It was a real Village project and it's coming back this November. There will be lots of chances to take part and for the village to make another night of light magic and community.

**Date: Sunday 17th November at 4pm**

Keep up to date by following us @peterboroughpresents

Leading up to the parade, you and your friends and family can join us at these events:

## **Eye Green Lantern Making Workshops**

We have workshops lined up at the centre of the village, but this time we wanted to make sure people from Eye Green were included and that is why we are basing ourselves at Eye Green in August.

Join us at these workshops and make a lantern that you can take home with you and decorate to bring to the parade in November. In these creative sessions, villagers can make a lantern for themselves or for their families, be inspired by Eye and its history. These workshops are also a chance for Eye residents to come and meet the team and Light Whale International who are leading the parade, ask questions, offer stories and get involved too.

No experience is necessary for lantern making. All materials are provided and the workshops are free. All ages welcome too, but under 16's must be accompanied by an adult

***Tue 6th August at Eye Nature Reserve as part of Froglife's Community Day, Times to be confirmed.***

***Sat 24th August at The Marigold Tavern at 10am-2pm***

**A Working Life in Eye- heritage talk with Dave Fovargue and Andrew Smith.**

Join local historians Dave and Andrew, for a talk about Eye, the people, places and industries that made and make the village. Find out if you live in one of the 9 pubs that were in Eye. Ask questions about Eye that you always wanted to know more about. The talk will feature photos and slides too.

***Friday 27th September, 7:00-9:30pm***

***Manor Farm Community Centre***

Donation on the door



# Save the Date - Eye Lantern Parade is back

We will be announcing our October workshops and other events soon. Keep up to date through Eye Community chat page on Facebook or by following us @peterboroughpresents or email [keely.mills@nenepartktrust.org.uk](mailto:keely.mills@nenepartktrust.org.uk)  
If you are not on social media or the internet, then call/text Keely on 07436 031383

We aim for our events to be accessible and more info on what to expect will be on our website.

[www.peterboroughpresents.org](http://www.peterboroughpresents.org)

## Eye has Super Constructors!

Back in June, we brought together a group of willing people from Eye to be 'Super Constructors'. What are they? This year leading up to the lantern parade we wanted to share lantern making techniques with residents who live in the village, so that they can lead their own lantern making workshops with their local groups. This means that more lanterns are being made with Eye Youth Club, St. Matthew's Church, Eye Primary, Eye WI and the Eye Can Craft group, and these skills are left with residents of Eye. We believe this team of Super Constructors will leave an exciting legacy of skills and collaboration for future parades and Eye events. We would like to say a huge thank you to all who took part and are looking forward to seeing what they do leading up to the parade. If you want to be a 'Super Constructor' or would like to know more about them, please contact Keely.



Photos D McKean



# The Fane Clinic

- ✓ Ingrown Toe Nails
- ✓ Calluses
- ✓ Corn Removal
- ✓ Foot Health Checks
- ✓ In Clinic Services



- ✓ Diabetic Foot Care
- ✓ Cracked Heels
- ✓ Athletes Foot
- ✓ Verruca Treatments
- ✓ Home Visits

**01733 571555**  
**www.thefaneclinic.co.uk**

**Celebrating 30+ Years of Foot Care, In Clinic and at Your Home**

## bunten painting services

At Bunten Painting Services, we pride ourselves on our customer satisfaction and value for money services.

- Competitive Rates
- Professional, clean and tidy service
- Interior and exterior painting
- Fully insured
- All jobs considered

So whether it's your living room, garden fence or you want to paint your home inside or out...

**CALL NOW** for your  
**FREE NO OBLIGATION** quote on

**01733 77 99 23**

**Mobile: 07849 887428**

or email us at [info@buntenpainting.com](mailto:info@buntenpainting.com)



## Permanent Welded Jewellery



*Jewellery made just for you*

Choose from bracelets, necklaces, rings & anklets.

Available in 9ct gold, filled gold & sterling silver

Book an appointment call  
 Samantha on 07763670294

[linksofelegance@gmail.com](mailto:linksofelegance@gmail.com)  
[www.linksofelegance.co.uk](http://www.linksofelegance.co.uk)

Follow on Instagram  
[linksofelegance\\_jewellery](https://www.instagram.com/linksofelegance_jewellery)



# Eye Open Space Group

## Manor Farm Park

Manor Farm Park has been awarded its 12th consecutive prestigious Green Flag award. Eye Open Space Group has continued to work with Peterborough City Council Officers, Aragon Services and our Ward Counsellors over the last year on the maintenance and improvements to the park.





**Private Day Nursery providing a perfect balance of both care and education for children since 1996.**

### FREE PLACES NOW AVAILABLE

- Providing funded places for 2, 3 and 4 year olds.
- Flexible hours to suit pre-school children.
- Term time places available.
- Sessions can be stretched over the whole year or term time for 15 & 30 hour funded children.
- Beautiful large spacious garden with mature trees creating shady areas for the children to play under.

We provide a stimulating clean, caring safe environment where children learn new experiences through play from 7.30am -6pm

To discuss your childcare requirement's please call today on 01733 223990 or email us at [toddlersinn@outlook.com](mailto:toddlersinn@outlook.com)



Artificial Grass - Aggregate Delivery - Turf

**DJB Landscaping Ltd**

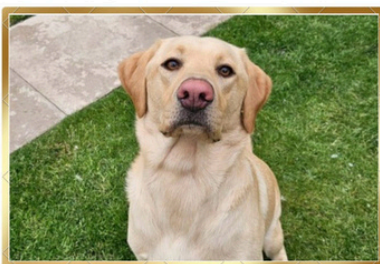
Complete care for all your landscape needs

Contact our office today  
01733467212

Alternativley contact Dex  
07712270572

Patios - Block Paving - And More

Porcelain - Pergolas - Fencing - Decking



**THANK YOU**

Enzo and his parents would like to say a huge thank you to everyone, who helped and supported us during the time he was lost and kept in touch with us after. There were so many of you and it would be impossible to know all of you. We are so proud to live in this area and couldn't be happier being with him at home, safe and healthy.

## Kay's Dressmaking & Alterations

Specialist Bridal Seamstress

87B High Street, Eye, PE6 7UX

Tel: 07795 967289

By Appointment Only

Available for all alterations incl.

- Bridesmaids/prom dresses
- Casual dresses/trousers
- Zip mending/replacement
- Curtains



IG: @peterboroughdressmaking

Email: peterboroughdressmaking@gmail.com



## Steve's Painting & Decorating

Internal & External  
Prompt & Reliable

07971707680



CALL US OR BOOK ONLINE  
TODAY!  
WWW.EYEMOTTESTCENTRE.COM

01733 222293



37 HIGH ST, EYE,  
PETERBOROUGH,  
PE6 7UP



WE HAVE A RANGE OF OPTIONS AVAILABLE FOR



SERVICING AND REPAIRS FOR  
ANY VEHICLE MAKE OR MODEL



CLASS 4 MOTS TO  
SUIT YOUR NEEDS,

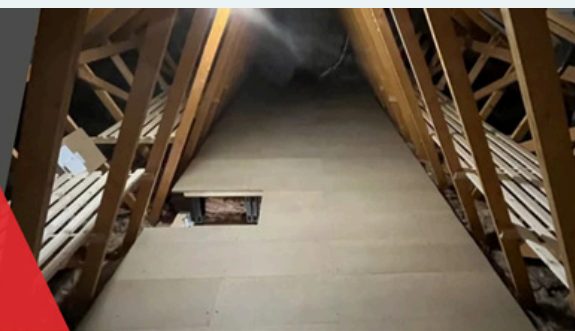
AS WELL  
AS OFFERING FREE RETESTS  
WITHIN 10 WORKING DAYS.

NOW OFFERING AIR CON  
SERVICING AND REGASSING

COLLECTION AND RETURN  
SERVICE AVAILABLE ON  
REQUEST



UNLOCK YOUR  
HOME'S  
POTENTIAL WITH  
LOFT BOARDING



## MAXIMIZING YOUR SPACE

Are you looking to make the most of your attic space? Loft boarding could be the perfect solution for you! Have you ever looked up at your loft and wondered how you could make better use of that space? Loft boarding might just be what you've been looking for. By boarding your loft, you can unlock a whole new world of possibilities for your home.

### OUR SERVICES

- ✓ Loft Hatches
- ✓ Loft Ladders
- ✓ Loft Boarding
- ✓ Loft Insulation
- ✓ Loft Lighting
- ✓ Loft Shelving

### OUR COVERAGE AREA

- ✓ Peterborough
- ✓ Spalding
- ✓ Stamford
- ✓ March
- ✓ Oundle

vitalloftsolutions Vital Loft Solutions

CONTACT US

+447498902508

Enquiries@vitalloftsolutions.co.uk

# Ward Report

Your ward Cllrs have raised objections to for the 'Reserved Matter's submission for 265 House situated off Eyebury Road ((24/00541/REM) and asked that the application is called in to the Planning Committee so these can be heard.

We were pleased to attend the Eye Festival event on Saturday 6th July, and thought the event went very well, with the weather being just about on side! Congratulations to Gabriela and all of the organising committee for the hard work put in the get this off the ground. We hope to see the Festival established as a regular event on the village social calendar.

We have requested Police and Council Community Officers conduct increased visits and walkabouts to the Nature Reserve during the summer months. Each year at this time year there tends to be increased incidents of ASB, swimming and the use of BBQs with the advent of the warmer weather. Swimming in the lake is very dangerous due to the depth and resulting sudden water temperature changes, and with dry weather the careless use of barbeques could see the fires get out of hand.

Cllrs Steve Allen, Rylan Ray and Mark Ormston

## Your City Councillors for Eye, Thorney & Newborough



**Cllr Steve Allen**



Phone: 01733 349609  
Mobile: 07769 972400  
Email:  
coachhouse163@sallenent.co.uk  
steve.allen@peterborough.gov.uk  
Facebook: Cllr Steve Allen  
Twitter: @stephenallen163



**Cllr Rylan Ray**



Phone: 07920 160108  
Email:  
rylan.ray@peterborough.gov.uk  
Facebook: Cllr Rylan Ray



**Cllr Mark Ormston**



Phone: 07483 373084  
Email:  
Mark.Ormston@peterborough.gov.uk  
Facebook: Cllr Mark Ormston  
Twitter/ X:  
MOrm\_Peterborough

**Please contact us regarding any  
City, Council, Village or Ward issues.**



## Community Social Carpet Bowls Club



We are a very successful, happy group of players. We don't take it too seriously and enjoy our Wednesday mornings from 10.30am  
We have all the equipment necessary and for any beginners we are happy to help you improve.

We will be taking a break for the month of August but return on **Wednesday 4th SEPTEMBER** in the Main Hall at Manor Farm Community Centre. Cost is £2.50 which includes a cuppa. For further information please come along or ring 01733 222312

### Alan Frost Plumbing & Heating. Small Job Domestic Plumber & Natural Gas Heating Engineer.

NO JOB TOO SMALL. FREE QUOTES. 20 YRS  
EXPERIENCE. POLITE, HONEST & RELIABLE.

**HOME-01733 705991**

**MOBILE-07769 266 928**

**GAS SAFE REG No. 526183**

EMAIL [a.frostplumbing@hotmail.co.uk](mailto:a.frostplumbing@hotmail.co.uk)  
Give me a call :)



# Business spotlight.....

## Caroline Briston

### Permanent Makeup



This edition of Eyescan we look at a local permanent makeup artist who is based on the High Street. Caroline Briston permanent makeup has been based in Eye for over 2 years and can be found at 87b High Steet next to Head 2 Head barbers.



Caroline is a permanent makeup artist with 7 years experience and specialises in eyebrow tattooing by machine method. This can create a realistic type brow with hair like strokes, or more of a shapely finish, named an ombré powder effect. These two different techniques can also be combined.

Permanent makeup has grown in popularity over the years as it benefits the person with a perfect look every day and hopefully enables us to be ready quicker!

Caroline understands the importance of being based in a village and away from the busy city centre of Peterborough, she wants to represent more of a personable approach and her business achieves this. Caroline shares the premises with her mum, Kay's Dressmaking and Alterations, which I am sure many residents in Eye have used.

Caroline is an ABT Accredited trainer and has launched her own training academy called FLICK Permanent Makeup Academy. A beginners programme will teach new artists the permanent makeup world. Caroline takes pride in her business and considers herself responsible for shaping the permanent makeup industry in Peterborough, advocating for safe, clean practice and good, quality workmanship which she strives for in every client.

Caroline has invested heavily in her career and by doing so she has a remarkable reputation in Peterborough as a result of this.

Want to find our more visit  
**[www.carolinebriston.co.uk](http://www.carolinebriston.co.uk)**



Examples of hairstrokes method 23 Eyescan

# EDWARD STUART

ESTATE AGENTS

## WHAT IS MY HOME WORTH?

01733 942000



[sales@edward-stuart.co.uk](mailto:sales@edward-stuart.co.uk)

## Keep Fit

**Aimed at seniors wishing to stay mobile and independent**


*Ideal for beginners, post-injury or post-surgery  
(once cleared to exercise)*

*Stay mobile & independent, improve your balance & flexibility*

Helps reduce onset of diabetes, risk of heart disease, stroke, stress & anxiety

**Tuesdays & Thursdays 11.30am** (45mins class)  
**ABLE Fitness, PE1 Business Park, PE1 4YZ** (Van Hage)  
Price range: £5-£7/session

Come and join our friendly group  
For more info, please Get in Touch!

 Personal Trainer Yvonne - UKA Licensed Athletics Coach

**Improve your fitness with fun,  
affordable personal training!**

**1-to-1 Personal Training | Running Coach | Group Classes**  
Mobility, Circuits, Boot Camp, Fitness Testing, Nutrition Advice *plus more...*

Call: 07976 764470 Email: [YvonnePersonalTrainer@Gmail.com](mailto:YvonnePersonalTrainer@Gmail.com)





## **PETERBOROUGH LIONS RUGBY ACADEMY**

**COME AND JOIN THE  
PRIDE OF PETERBOROUGH**

**SEASON STARTS 8TH SEPTEMBER  
10:00AM TO 12:00PM  
AGES 4 TO 17**

**BE TRAINED BY LEVEL 1 & 2 RFU COACHES  
EVERY SUNDAY**

**GET INVOLVED IN THE MOST INCLUSIVE,  
FRIENDLY, FUN SPORT KNOWN TO MAN  
BE PART OF A TEAM, BE PART OF A CLUB,  
BE A LION!**

**BRETTON PARK, PE3 8DF**



**CONTACT  
PETERBOROUGH-LIONS-RUGBY@OUTLOOK.COM  
FOR MORE DETAILS**



## **THE POST OFFICE**

*Returns to Eye Village*

At Manor Farm Community Centre  
70 High Street, Eye, PE6 7UY

**Tuesdays 10am – 1pm**

A full range of services, including cheque/cash deposits/withdrawals, full range of postal services, returns, pension withdrawal and many others.

**A WELCOME addition to the community.**

# Eye Parish Council

The Leeds Hall, High Street, Eye  
Peterborough, PE6 7UU

Telephone 01733 222037

E-Mail: [eyeparishcouncil@btinternet.com](mailto:eyeparishcouncil@btinternet.com)

Clerk to the Council:

Mrs Brenda Stanojevic

## Parish Council Members

Chairman – Mr A Short

Vice-Chairman – Mr A Martin

Members are – Ms J Edge, Mr A Goodsell,  
Mr C Lester, Mrs D Magnus, Mrs K  
Mulholland, Mr A Smith, Mr R Taylor and  
Mr W Walker.

If you are interested in becoming a Parish  
Councillor then why not come along to  
one of our meetings or speak to one of our  
councillors or clerk

Peterborough City Councillors for Eye are:  
Councillors Steve Allen, Rylan Ray & Mark  
Ormston

The Parish Council website can be found  
on [www.eyeparish.org.uk](http://www.eyeparish.org.uk)

City Councillor Surgeries in the Leeds Hall  
from 9-11am on 24th August, 12th  
October & 30th November

## Meetings

The Parish Council meet usually on the 3rd  
Thursday of the month (except December)  
in the Leeds Hall at 7pm.

There is a 10 minute session at the start of  
the meeting for members of the public to  
attend and discuss anything of concern.

# Eye Parish Council Meeting Dates 2024



Thursday 15th August  
Thursday 19th September  
Thursday 17th October  
Thursday 21st November  
Thursday 5th December

## Eye Nature Reserve

This is a pleasant and peaceful  
haven in our village. Permits to fish  
at the Reserve are now available  
and are FREE from the Parish Clerk  
by post or by a personal visit on  
Wednesday mornings on production  
of a current rod licence.

## Neighbourhood Plan

The Neighbourhood Plan for Eye is  
moving forward. Topics covered that  
matter to all that live in Eye.

## POLICING

Police Surgery for Eye, Thorney &  
Newborough in the Leeds Hall on  
**Tuesday 27th August 5-7pm.**  
Please come along and voice any  
concerns directly to PC Main.

# Leeds Hall - Wedding Ready!

The Leeds Hall is available to hire to local groups as well as to the community for children's parties, birthday parties, family parties, weddings, christenings, exercise classes, coffee mornings and more. The hall can seat 130 people, has disabled access, disabled toilet as well as a small stage, projector and screen. The hall is licenced for alcohol, has a fully equipped kitchen. Please contact the clerk to look at the facilities and to check availability – Email [eyeparishcouncil@btinternet.com](mailto:eyeparishcouncil@btinternet.com) or leave a message on Tel 01733 222037



## **Coffee Morning**

The annual coffee morning - hosted by the Eye Lovelies

## **Defibrillators**

There are now 3 defibrillators in Eye, with 2 more on the way. These are located at

- Front of Leeds Hall
- Front of Manor Farm Community Centre
- Front of Pavilion at the Recreation Ground

## **D Day - Beacon Lighting**

Thank you to the organisers and to those who read the Tribute, it was lovely to see so many people.

## **King Charles III Portrait**

We were fortunate to qualify for a free portrait of the King - this is now proudly displayed in the Leeds Hall

## **Speed Watch**

The Eye Speedwatch scheme needs more volunteers, to get actively involved in monitoring the speed of vehicles traveling through the village



Creating a safer  
Cambridgeshire

**Come and speak with your local  
neighborhood policing team about  
concerns you have in the area.**

**EYE - Leeds Hall, High Street,  
TUESDAY 27th AUGUST 2024,  
5pm – 7pm**

Facebook: Policing Peterborough

Subscribe: [www.eCops.org.uk](http://www.eCops.org.uk)

Visit: [www.cambs.police.uk](http://www.cambs.police.uk)



# Eye Community Speedwatch

A Community led initiative to reduce speeding vehicles & make our village safer

The Eye Speedwatch scheme needs volunteers now to get actively involved in monitoring the speed of vehicles travelling through our village. The owner of any vehicle seen exceeding the speed limit is sent an advisory letter by the Constabulary, explaining that speeding is unacceptable and asking them to be more considerate.

It's not enforcement, it's about educating road users to drive safely and to be made aware of the dangers of speeding.



There's no time commitment. We run sessions when we can, and it only takes an hour of your time to attend. If you would like more information on how to help make our village safer please e-mail [speedwatch@cambs.pnn.police.uk](mailto:speedwatch@cambs.pnn.police.uk)



# Eye Youth Club

Eye Junior Youth Club is open Fridays 6.30 – 8.30pm during term time for 9 to 12 year olds, attendance is 60-70.

Attendance at the club continues to grow and we need more volunteers, If you would like to help please chat with Lilian at Youth Club or call or text her on 07712482821 – this doesn't mean every week, we have some helpers once a fortnight or 3 weeks but we need some more regular reliable people. We also welcome 16 –18 year old volunteers who are doing their Duke of Edinburgh awards.

Thank you to Jasmine Alice make up artistry for joining us on two of our Friday evenings Scars and footballs where the most popular.



For the safety of the children please do not drop off or park outside the Youth Centre.

All new members will need a Parent/Carer to attend and complete a registration form.

Would you please remind your children that once inside Youth Club we are responsible for their whereabouts so they will not be allowed to leave early unless they have either written permission or we can get hold of the parent via the number we have on their registration form. So please let us know if your details change.

We are awaiting the City Council to initiate the reopening of the Senior Youth Club.

eat the food you love  
and still lose weight!

# yes you can

with  
**Slimming  
World**

**FREE  
membership**

when you commit  
to a 6 or 12-week  
Countdown  
course\*

24th March to 13th April 2024

## **YOUR LOCAL GROUPS**

### **EYE**

**MANOR FARM,  
COMMUNITY CENTRE, PE6 7UY**

**Tuesdays 5:30pm**

**With Alison**

**07851 426886**

### **WERRINGTON**

**BROOKSIDE METHODIST CHURCH, PE4 7TG**

**[Mondays 9:00am, 6:00pm & 7:30pm**

**Tuesdays 8:00am & 9.30am**

**With Debra 07880 567310**

### **PASTON & GUNTHORPE**

**Community Centre PE4 7YH**

**Thursdays 9.30am, 5.30pm & 7pm**

**With Alison 07851 426886**

read Joe, Sapphire and Abby's stories here

**[slimmingworld.co.uk](http://slimmingworld.co.uk)**

\*At participating groups. Terms and conditions apply. Visit [slimmingworld.co.uk/offers](http://slimmingworld.co.uk/offers) for more information.

***Slimming***  
-WORLD-

touching hearts, changing lives



Eye Juniors Football Club is a fantastic hub for young talent, and we are thrilled to share our recent successes with you. With over 80 players across seven teams, ranging from Under-7s to Under-15s, we are proud to showcase a diverse and dynamic array of footballing talent.

Our recent presentation day was a testament to the hard work and dedication of our coaches, volunteers and the unwavering support from families and the local community.

As the club continues to grow, so does its need for support. We are always looking for more volunteers to help with coaching and match day logistics. The success of Eye Juniors FC is deeply rooted in community involvement, and every bit of help counts.

To sustain and further our progress, we are always actively seeking sponsors. Sponsorship is crucial for covering costs such as equipment and kits.

It's an excellent opportunity for local businesses to support a valuable community asset and gain visibility among local families and supporters. We invite everyone in the village to come and support our teams, from September we will have games most Saturdays and Sundays at the Recreation ground on Lindisfarne Road.

Also we are pleased that thanks to a grant from the Premier League we have secured a defibrillator which is now in place at the Recreation Ground.

For more information on how you can get involved or become a sponsor, please visit our Facebook page **Eye Juniors Football Club** or email us **[eyejuniorsfc@gmail.com](mailto:eyejuniorsfc@gmail.com)**





## Duncan Turner Associates Specialists in Estate Planning

Your local Will writing service based in Eye

**01733 627 080 or 07827 453 062**

- **Basic & Mirror Wills**
- **Trust Wills: property & discretionary**
- **Lasting Power of Attorney: personal finance & health**
- **Lasting Power of Attorney for business owners**
- **Probate and Estate Administration**

**Free home visits**

**Call Tim Turner for more information**

**All work fully insured**

[www.duncanturnerassociates.com](http://www.duncanturnerassociates.com)

**Duncan Turner Associates Limited**



Institute of  
Professional  
Willwriters

• MEMBER •

**Entertainment to  
make your occasion special**



## AP GARDEN & LANDSCAPE

- Hedge Trimming
- Weeding
- Turfing & Seeding
- Lawn Maintenance
- Pruning Small Trees & Shrubs
- Shed or Garage Clearance
- Reasonable Rates



**ANDREW PAPE**  
**6 BACK LANE, EYE**  
**01733 573687 / 07904376038**

# Eye Community Runners

Spring into Summer is always a busy time for the club starting with our annual 10k and 3k fun run which was again well supported by the local running community. Thank you to Eye School for hosting us again and the ESA for providing refreshments. We were not successful in securing a flypast from the Battle of Britain Memorial Flight above Eye this year as timing just didn't work out with other events. The club were saddened to hear of the accident involving a Spitfire of the BBMF in which the pilot Sqn-Ldr Mark Long sadly lost his life. Mark had been my contact with the BBMF for the past two years and had also piloted the flypast aircraft for 2022 and 2023. In recognition Eye Community Runners made a donation to the BBMF in Mark's honour.



In June we held the Eye 5k and 3k races as part of the Peterborough Grand Prix Series which comprises five events taking place between June and August at different locations across the city with a record turnout.

Our Charity race had been due to take place on 4th July but was put back following the announcement of the General Election until 18th July.

We would like to thank everyone who supported our events and also to say thank you to everyone who may have been inconvenienced by the races.

Eye were in action at the Green Wheel Relay, a seven stage relay using the Green Wheel Network of roads and tracks around the city starting and finishing at the Athletics Track

Members have been out in force at a number of different races: Windermere and Rob Burrows Leeds marathons: Belvoir Hose Half, Edinburgh Half), Grim Reaper - 40 mile race 10K's including Woodhall Spa, Rutland, Deeping, Thurlby, Langtoft, Summer Solstice, Lymington Lifeboats, and the Whissendine 6 (miles) amongst many other events. .

The Tri section have been busy too, taking part in a number of events including The Dambuster at Rutland Water, Outlaw Nottingham Half Ironman and Lakesman Triathlon, .

In June we held our annual Awards Night at the Community Centre for a celebration of achievements over the past 12 months, with over 90 guests attending.

The Great Eastern Run in Peterborough takes place on 16th October with a new finish taking in the Cathedral precincts and ECR will shortly be involved the Get Fit for the East training sessions which take place from mid-July until early October with the aim of helping runners get ready for the half marathon. Members will also be manning the start and finish areas.



We continue to welcome new members to the club who have started running during the past year and of course If you have entered a race or just starting to run and need someone to train with and help motivate or get some advice, then give us a call or drop an email.

Come and see us at the club, you know you want to. We really don't bite!

### **Meeting Days, Places and Contact**

**Seniors** – Tuesdays – 7pm at Nene Valley Community Centre, Candy Street, Oundle Road, Peterborough.

Thursday – 7pm at Lindisfarne Recreation Ground, Eye (Main Club Night)

**Juniors** – Thursday - 5:45pm at Lindisfarne Recreation Ground, Eye  
Track Sessions

Speed training sessions at the Athletics track on the 1st and 3rd Wednesday of each month @ 7pm. Details at [www.gpan.org.uk](http://www.gpan.org.uk)

It's never too late, so dust off those shoes and get running! Don't run alone, run with us. For races / events in the area check our website at [www.eyerunners.co.uk](http://www.eyerunners.co.uk). Runners from 8 upwards welcome.

Dave Richmond

[dave@eyerunners.co.uk](mailto:dave@eyerunners.co.uk)

01733 223532 07748 301782

[www.eyerunners.co.uk](http://www.eyerunners.co.uk)

[www.ey10k.co.uk](http://www.ey10k.co.uk)

# Your local experts in:

DIGITAL AERIAL INSTALLATIONS & REPAIRS

SATELLITE INSTALLATIONS

EXTRA TV POINTS • FM & DAB AERIALS

TV WALL MOUNTING • CCTV

FOR MORE INFORMATION

Call: 01733 577750 or visit: [pvsaerials.co.uk](http://pvsaerials.co.uk)



## Tyler Building Services



**M: 07960 415685**

**E: [tylerbacon53@gmail.com](mailto:tylerbacon53@gmail.com)**

● Kitchens & Bathrooms

● Plumbing

● Carpentry

● Flooring

● General Building

● Landscaping

● Fencing

● Driveways & Patios  
and more...

**QUOTES AVAILABLE!**



## S.D. ELECTRICS

Commercial • Industrial • Domestic

11The Square • Vicarage Farm Road • Fengate • Peterborough • PE1 5TS  
Tel: 01733 890743 • Mob: 07860 773143 • Email: duffy\_s@btconnect.com

CALL OUT SERVICE

FREE QUOTATION AND ADVICE

For All Your Electrical Requirements including

TV Systems .... Phone points

Security Lighting .... Outside sockets

Boiler Controls

Water Heaters .... Electric Showers

Economy 7 Heating

Extract Systems ... Circulation Fans

Fire Alarm Systems

Emergency Lighting Systems

Smoke Detectors

Low Voltage Lighting Systems

**MOTOR REWINDS AND REPAIRS**

Cooker/Storage/Immersion Heater repairs

Test and Inspection

**ALL WORK TO COMPLY WITH IEE**

**REGULATIONS**

**APPROVED CONTRACTOR**

**S.D. ELECTRICS**

# May the 4th Family Disco



| Manor Farm Weekly Timetable | Hall (capacity 120 people) |  | Lounge (cap. 45 people)  |
|-----------------------------|----------------------------|--|--|
|                             | Monday                     | Kountry Kickers<br>1:00PM - 3:00 PM          | Community Café<br>11:00AM - 12.45PM                                |
|                             |                            | Sequence Dancing<br>7:00PM - 10:00PM         | Model Engineering<br>7:30pm-9:30PM                                 |
|                             | Tuesday                    | <b>Available</b>                             | Community Hub<br>10:30AM - 2:00PM                                  |
|                             |                            | Slimming World<br>5:30PM - 6:45PM            |  |
|                             |                            | Zumba<br>7:30PM - 8:30PM                     | Yoga<br>6:30PM - 7:30PM  |
|                             | Wednesday                  | Carpet Bowls<br>10:30AM -12:00PM             | Painting for Pleasure<br>10:00AM - 1:00PM                          |
|                             |                            | Jeans Tea Dancing<br>1:00PM - 4:00PM         |  |
|                             |                            | Martial Arts<br>4:30PM - 6:30PM              | Committee Meeting<br>7:00PM - 9:00PM<br>3rd Wednesday of the month |
|                             |                            | Five Jays<br>Dog Training<br>7:00PM - 9:00PM |  |
|                             | Thursday                   | Zumba<br>7:00PM - 8:00PM                     | Luncheon Club<br>11:30AM - 1:30PM                                  |
|                             |                            | Dance Classes<br>(Salsa)<br>8:20PM - 11:20PM | Friendship Group<br>2:00PM - 4:00PM                                |
|                             | Friday                     | Babies and Tots<br>9:45AM - 11:30AM          | <b>Available</b>   |

Event & Private Hire Fees: £15 - Kitchen Hire Returnable deposit of £100 with booking form to secure  
 £40 per hour - Hall £30 - Bar Hire  
 £30p/h - Meeting Room

# BINGO

## ★ NIGHT ★

### FAMILY FUN

FRIDAY 6th SEPTEMBER 2024

DOORS OPEN 6.30PM



MANOR FARM COMMUNITY CENTRE  
HIGH STREET, EYE, PE6 7UY